



**CEEVER**

**SPRAYMASTER serie - CIL**



## TAVOLA OSCILLANTE

Per pezzi di grandi dimensioni e peso, si utilizzano cabine di lavaggio con tavola oscillante e rampe rotanti.

Questo sistema consente di ottenere macchine con portata superiore a 80.000 kg e dimensioni che superano i 5.000 mm di lunghezza.

Durante il trattamento, le rampe poste sui quattro lati della cabina hanno un angolo di oscillazione di circa 70°, contemporaneamente il carrello si muove in senso longitudinale con un movimento alternato dentro alla cabina.

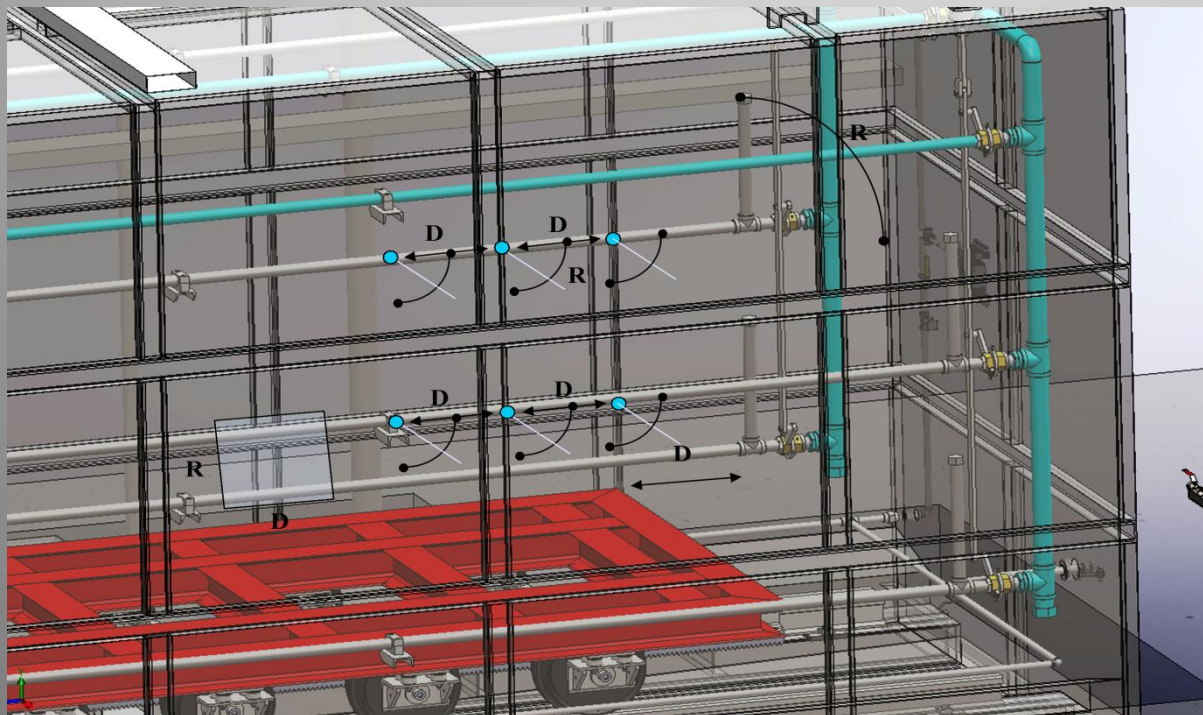


## OSCILLATING TABLE

for large-sized and heavy pieces, are used washing booths provided with a oscillating table and rotating ramps.

This system allows to obtain machines with flowrate superior 80.000 kg and dimension that get over the 5.000 mm of length.

During the treatment, the ramps, positioned on the four sides of the booth, have an oscillation angle of approximately 70°. At the same time, the trolley moves lengthways, with an alternating motion inside the booth.





Tale soluzione consente di coprire tutti i punti dei pezzi in trattamento utilizzando così basse potenze di pompaggio e di riscaldamento.

I serbatoi sottostanti al piano di lavoro sono provvisti di ampie bocchette di ispezione e pulizia.

L'erogazione delle soluzioni dai serbatoi avviene attraverso una o più elettropompe, le soluzioni poste così in ciclo, tornano nei propri serbatoi attraverso filtri metallici estraibili che ne permettono la pulizia.

Nella serie Tau un esclusivo ed originale sistema di valvole, assistite da attuatori pneumatici, limita i diffusi effetti negativi dovuti alla miscibilità delle soluzioni in ciclo nel vano di lavaggio.

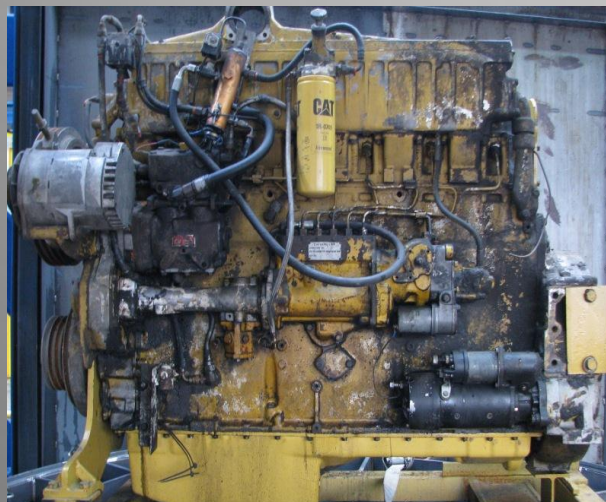
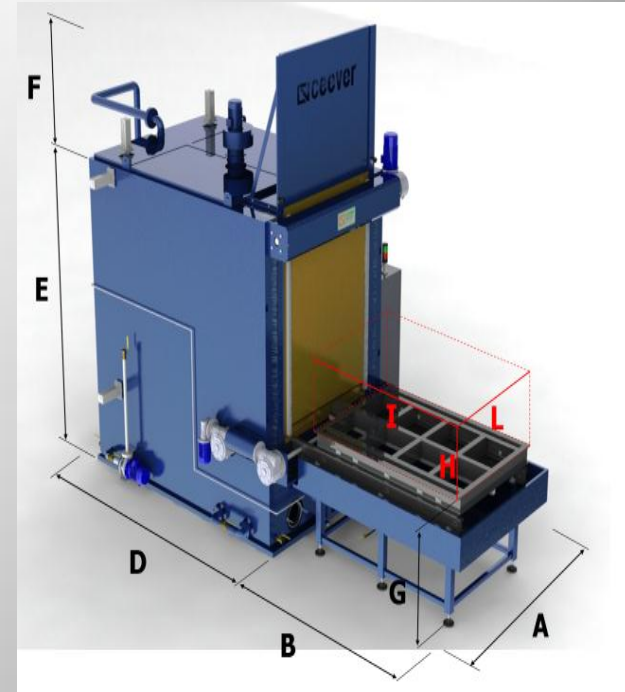


This solution gives the possibility to cover all the points of the pieces in treatment, using low pumping and heating capacities.

The tanks under the workplan are provided with large windows of cleaning and inspection.

Solutions are supplied from the reservoirs through one or more electro-pumps and the solutions made circulate return to the reservoirs through removable metal filters that make it possible to clean them.

In Tau series an exclusive original system of valves, assisted by pneumatic actuators, limits the well-known negative effects caused by the solution mixing in cycle in the washing chamber.



# DATA SHEET

	Cil Alfa	Cil Alfa H+	Cil Beta	Cil Beta H+	Cil Gamma	Cil Gamma H+	Cil Delta	Cil Delta H+	Cil Sigma	Cil Sigma H+	Cil Omega	Cil Omega H+	UM	
<b>Useful dimensions of load</b>	length	1000	1000	1200	1200	1400	1400	1600	1600	1800	1800	2000	2000	mm
	depth	1500	1500	1800	1800	2200	2200	2500	2500	3000	3000	4000	4000	mm
	height	1000	1500	1000	1500	1000	1500	1000	1500	1000	1500	1000	1500	mm
	load	1000	1000	1500	1500	2000	2000	2500	2500	3000	3000	4000	4000	kg
<b>Electric pump</b>	type	centrifuge	centrifuge	centrifuge	centrifuge	centrifuge	centrifuge	centrifuge	centrifuge	centrifuge	centrifuge	centrifuge	centrifuge	
	power	7,5	7,5	7,5	7,5	9,2	9,2	11	11	11	11	15	15	kw
	pressure	3,5	3,5	3,5	3,5	3,5	3,5	3,5	3,5	4,5	4,5	4,5	4,5	bar
<b>Tank</b>	type	monoblock	monoblock	monoblock	monoblock	monoblock	monoblock	monoblock	monoblock	monoblock	monoblock	monoblock	monoblock	
	washing	1000	1000	1300	1300	1500	1500	1500	1500	1500	1500	2000	2000	liters
	rinse	800	800	1000	1000	1000	1000	1000	1000	1000	1000	1500	1500	liters
<b>Heating</b>	electric	15+10	15+10	20+10	20+10	20+10	20+10	25+15	25+15	25+15	25+15	30+20	30+20	kw/h
	gas	2x15.000	2x15.000	2x20.000	2x20.000	2x20.000	2x20.000	2x25.000	2x25.000	2x25.000	2x25.000	2x30.000	2x30.000	Kal/h
	gas-oil	2x15.000	2x15.000	2x20.000	2x20.000	2x20.000	2x20.000	2x25.000	2x25.000	2x25.000	2x25.000	2x30.000	2x30.000	Kal/h
	vapor	2x15.000	2x15.000	2x20.000	2x20.000	2x20.000	2x20.000	2x25.000	2x25.000	2x25.000	2x25.000	2x30.000	2x30.000	Kal/h
<b>Overall Dimensions</b>	length	1500	1500	1800	1800	2000	2000	2200	2200	2400	2400	2600	2600	mm
	depth	3000+1500	3000+1500	3500+2000	3500+2000	4000+2200	4000+2200	4500+2500	4500+2500	5000+3000	5000+3000	6000+4000	6000+4000	mm
	height	3500	4000	3500	4000	3500	4000	3500	4000	3500	4000	3500	4000	mm
<b>Material of construction</b>	Fe	X	X	X	X	X	X	X	X	X	X	X	X	
	inox aisi 304	X	X	X	X	X	X	X	X	X	X	X	X	
	inox aisi 316	X	X	X	X	X	X	X	X	X	X	X	X	
	inox aisi 316L	X	X	X	X	X	X	X	X	X	X	X	X	
<b>Endowments</b>	Aspiration fumes	included	included	included	included	included	included	included	included	included	included	included	included	
	Vents of Cleaning	included	included	included	included	included	included	included	included	included	included	included	included	
	Tank insulation	included	included	included	included	included	included	included	included	included	included	included	included	
	Booth insulation	included	included	included	included	included	included	included	included	included	included	included	included	
	Metallic filter of protection	included	included	included	included	included	included	included	included	included	included	included	included	
	Optic indicators of level	included	included	included	included	included	included	included	included	included	included	included	included	
	Vertical Mechanics Door	included	included	included	included	included	included	included	included	included	included	included	included	
	Handling of trolley	included	included	included	included	included	included	included	included	included	included	included	included	
	Valves of regulation flow rate pressure	included	included	included	included	included	included	included	included	included	included	included	included	
	Valves of dregs unloading	included	included	included	included	included	included	included	included	included	included	included	included	
	Tilted tank bottom	included	included	included	included	included	included	included	included	included	included	included	included	
	Tilted booth bottom	included	included	included	included	included	included	included	included	included	included	included	included	



<b>OPTIONALS</b>	<b>Cil Alfa</b>	<b>Cil Alfa H+</b>	<b>Cil Beta</b>	<b>Cil Beta H+</b>	<b>Cil Gamma</b>	<b>Cil Gamma H+</b>	<b>Cil Delta</b>	<b>Cil Delta H+</b>	<b>Cil Sigma</b>	<b>Cil Sigma H+</b>	<b>Cil Omega</b>	<b>Cil Omega H+</b>	<b>UM</b>
Drying	X	X	X	X	X	X	X	X	X	X	X	X	
Aspiration with centrifugal scrubber	X	X	X	X	X	X	X	X	X	X	X	X	
Aspiration with scrubber	X	X	X	X	X	X	X	X	X	X	X	X	
Increased hole of cleaning	X	X	X	X	X	X	X	X	X	X	X	X	
Increased load	X	X	X	X	X	X	X	X	X	X	X	X	
Cycle counter	X	X	X	X	X	X	X	X	X	X	X	X	
Separators of oil	X	X	X	X	X	X	X	X	X	X	X	X	
Metering device of product	X	X	X	X	X	X	X	X	X	X	X	X	
Double filtering	X	X	X	X	X	X	X	X	X	X	X	X	
Filtering in total flow rate	X	X	X	X	X	X	X	X	X	X	X	X	
Single filtering	X	X	X	X	X	X	X	X	X	X	X	X	
Lance of manual washing	X	X	X	X	X	X	X	X	X	X	X	X	
Weekly clock	X	X	X	X	X	X	X	X	X	X	X	X	
Programmable logic controller	X	X	X	X	X	X	X	X	X	X	X	X	
Pump to high flow rate	X	X	X	X	X	X	X	X	X	X	X	X	
Pump to high pressure	X	X	X	X	X	X	X	X	X	X	X	X	
Pump of independent rinse	nd	nd	X	X	nd	nd	X	X	nd	nd	X	X	
Pump of emptying	X	X	X	X	X	X	X	X	X	X	X	X	
Pump of emptying and transfer	nd	nd	X	X	nd	nd	X	X	nd	nd	X	X	
Automatic top up	X	X	X	X	X	X	X	X	X	X	X	X	
Ramp of blowing AC	X	X	X	X	X	X	X	X	X	X	X	X	
Ramp of rinse demi.	X	X	X	X	X	X	X	X	X	X	X	X	
Rotating ramps	X	X	X	X	X	X	X	X	X	X	X	X	
Adjustable speed of rotation	X	X	X	X	X	X	X	X	X	X	X	X	
Valves of sample	X	X	X	X	X	X	X	X	X	X	X	X	
Safety vat	X	X	X	X	X	X	X	X	X	X	X	X	
Valve of rinse control	nd	nd	X	X	nd	nd	X	X	nd	nd	X	X	
Gun of blowing on platform	X	X	X	X	X	X	X	X	X	X	X	X	
Optic signal of end cycle	X	X	X	X	X	X	X	X	X	X	X	X	
Acoustic signal of end cycle	X	X	X	X	X	X	X	X	X	X	X	X	

Optional





# CEEVER

Via Cesare Battisti 2  
20090 Settala  
Milan  
Italy

**PHONE**

+39.[0]2.95.77.00.24

**FAX**

+39.[0]2.95.77.03.01

**MAIL**

sales@ceever.com

**WWW.CEEVER.COM**

